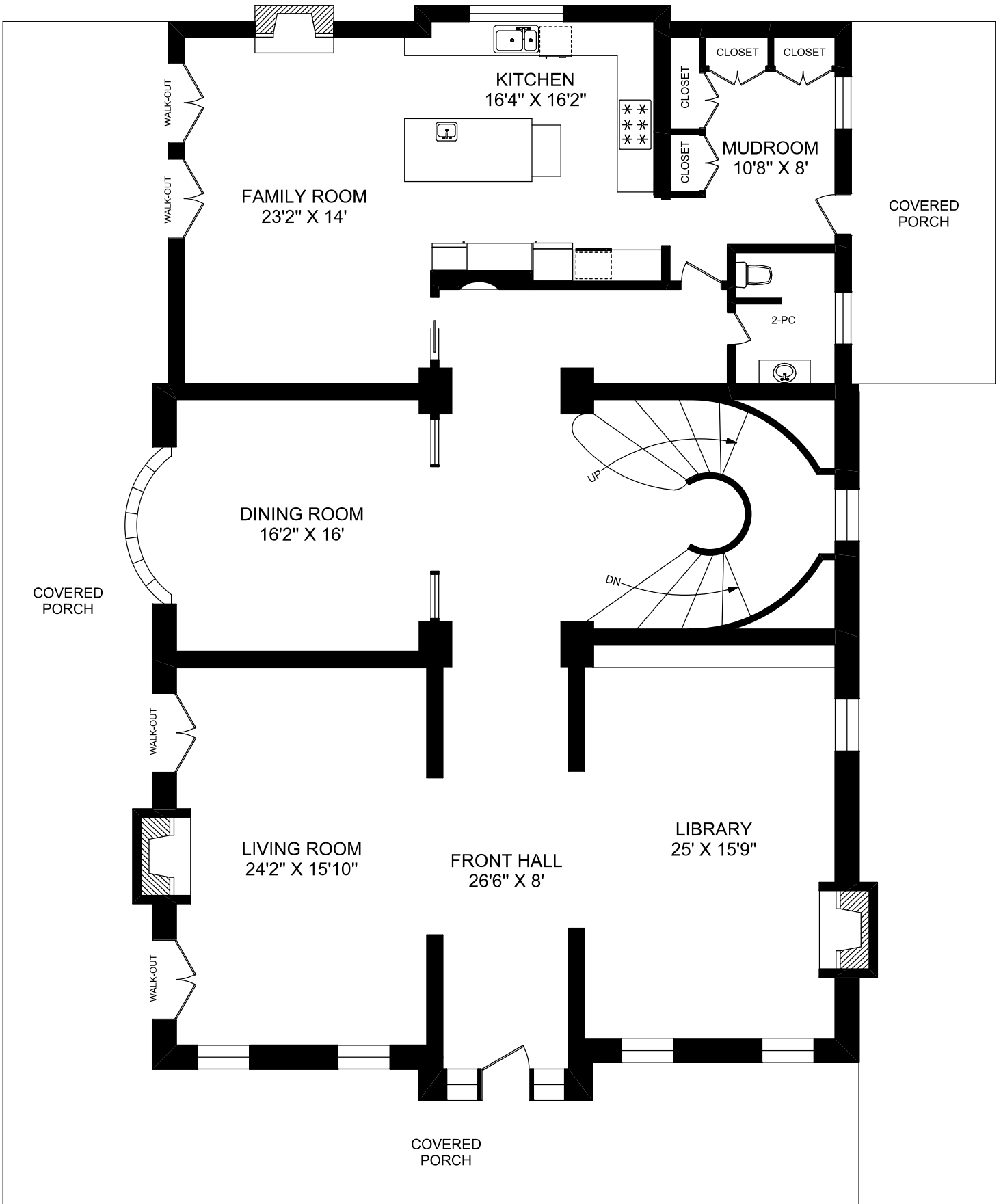


124 PARK ROAD



MAIN FLOOR
2982 SQUARE FEET
(CEILING HEIGHT : 11'-8")



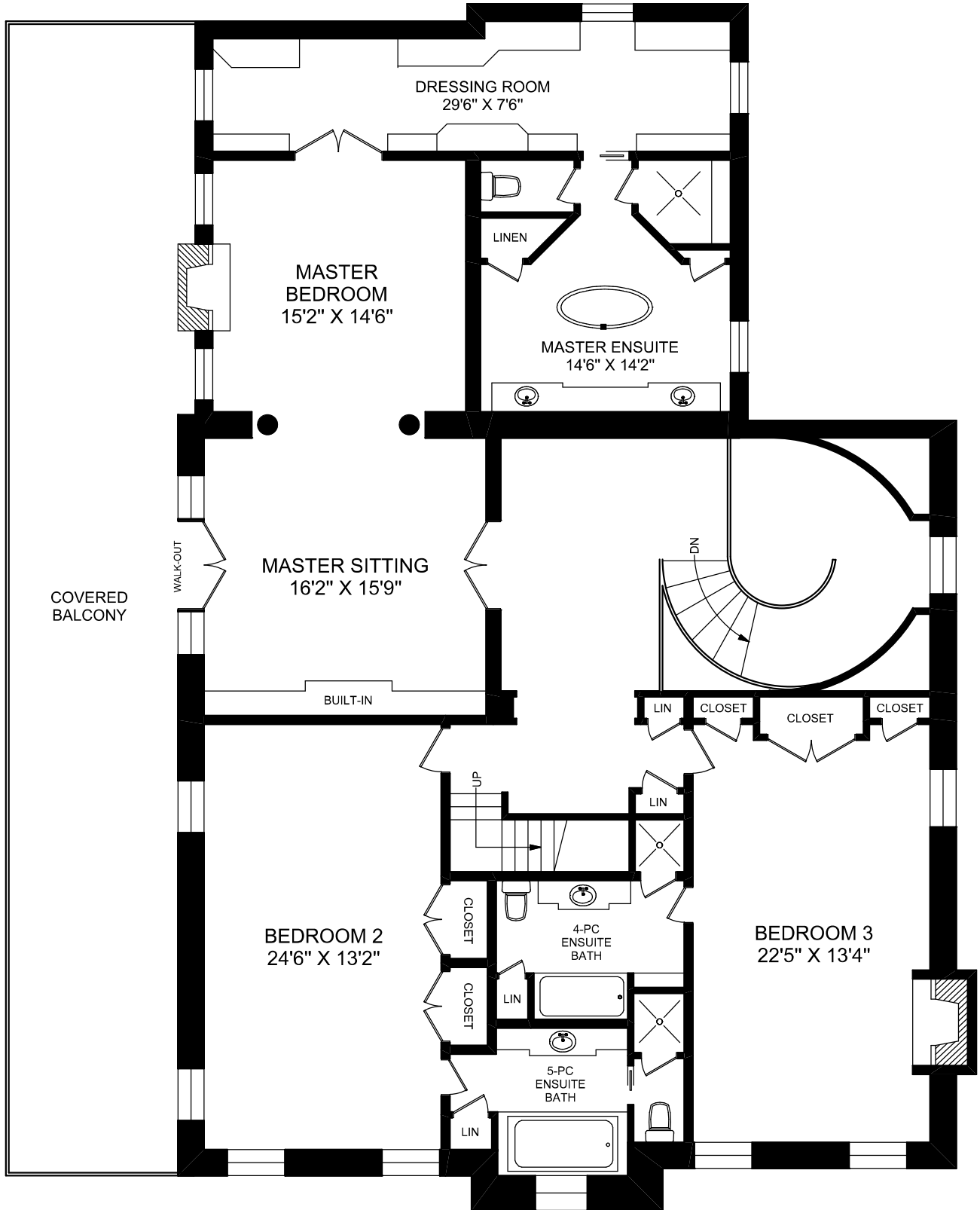
FEET
truPlan

416 573 2096

E & O.E.

Floor plan may not be 100% accurate.

124 PARK ROAD



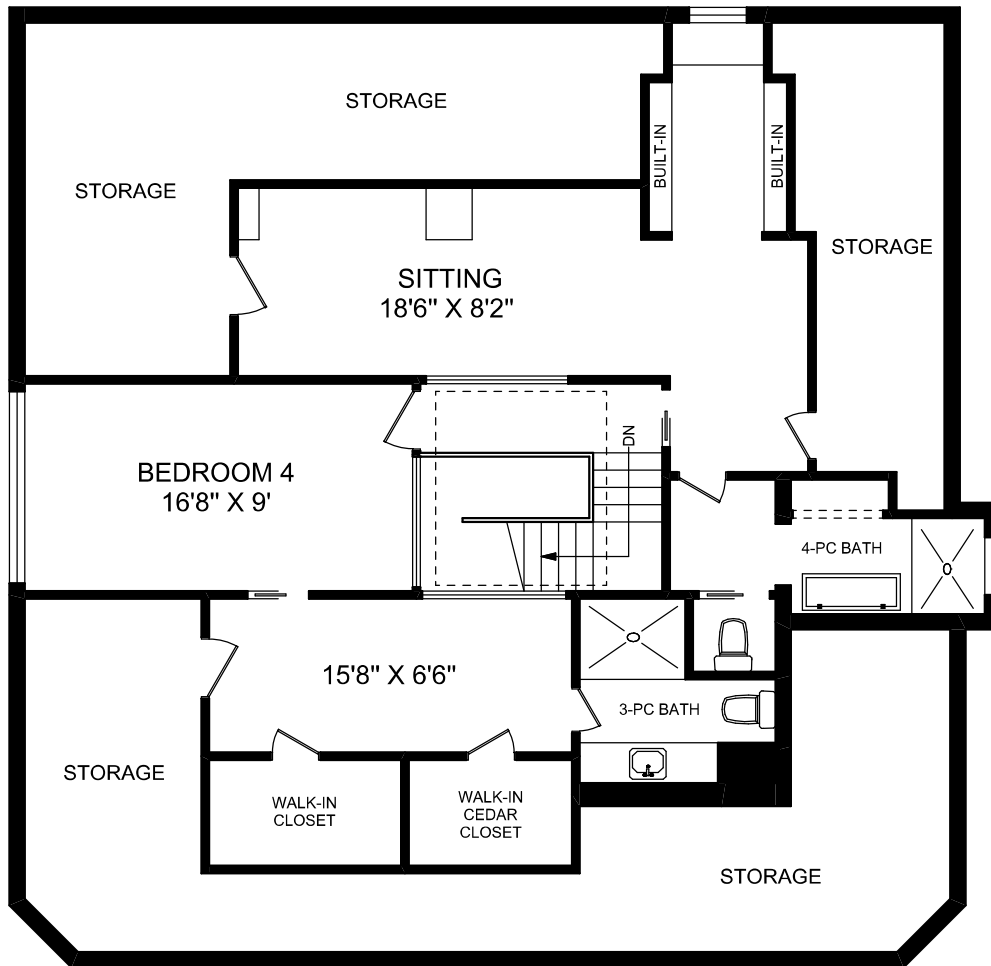
SECOND FLOOR
2717 SQUARE FEET
(CEILING HEIGHT : 10'-4")



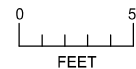
truPlan
416 573 2096
E & O.E.

Floor plan may not be 100% accurate.

124 PARK ROAD



THIRD FLOOR
1358 SQUARE FEET
(CEILING HEIGHT : 8'-6")



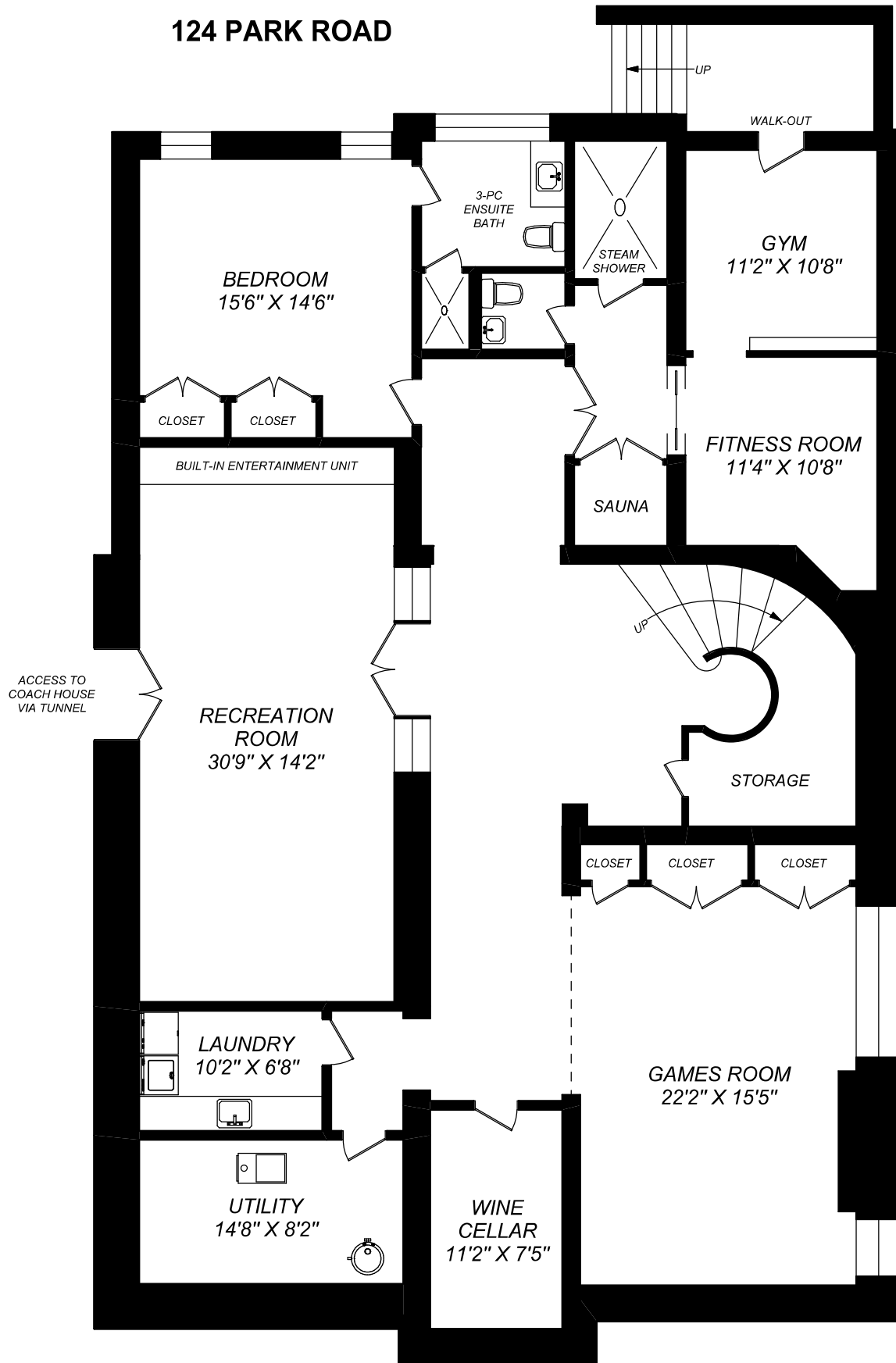
truPlan

416 573 2096

E & O.E.

Floor plan may not be 100% accurate.

124 PARK ROAD



LOWER LEVEL
2982 SQUARE FEET
(CEILING HEIGHT : 8'-4")



FEET
truPlan

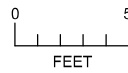
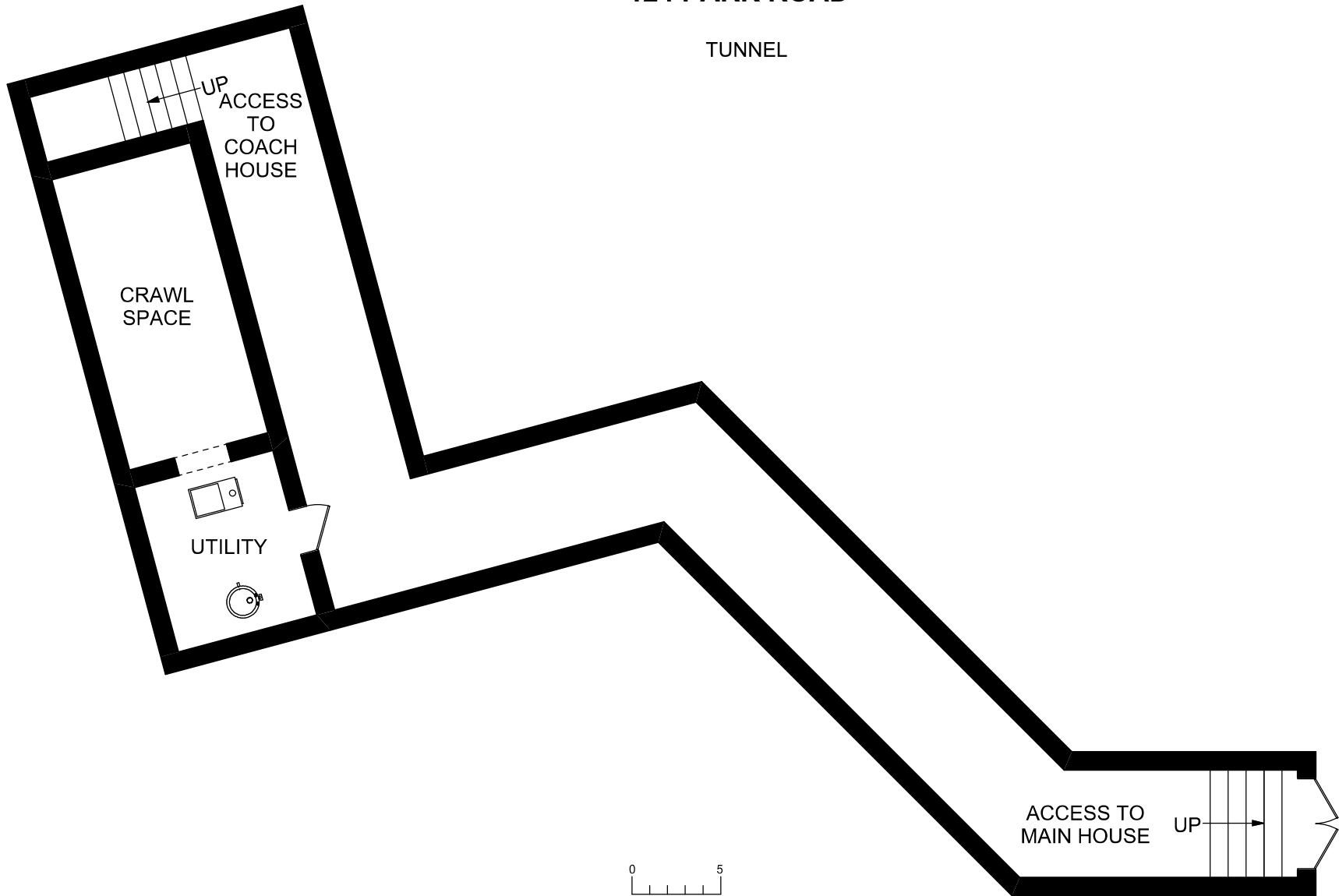
416 573 2096

E & O.E.

Floor plan may not be 100% accurate.

124 PARK ROAD

TUNNEL



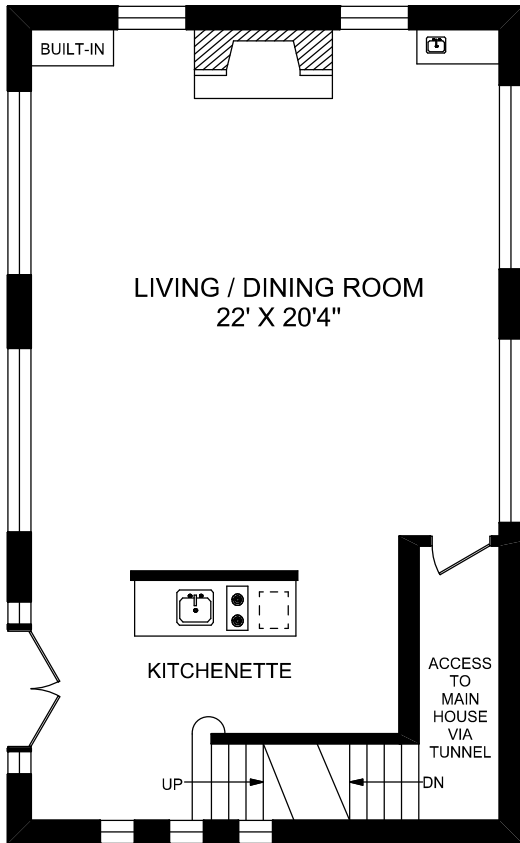
truPlan

416 573 2096

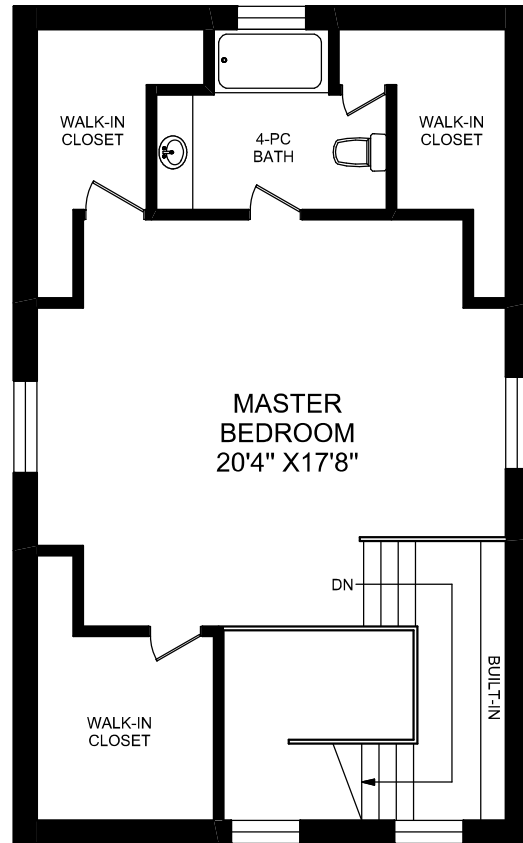
E & O.E.

Floor plan may not be 100% accurate.

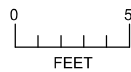
124 PARK ROAD
(COACH HOUSE)



MAIN LEVEL
812 SQUARE FEET



UPPER LEVEL
812 SQUARE FEET



truPlan
416 573 2096

E & O.E.
Floor plan may not be 100% accurate.