



637519 PRINCE OF WALES ROAD, MULMUR

ROB MCALEER, Sales Representative
rob@georgianbaygroup.com | 705-888-3981

CHERYL MACLAURIN, Sales Representative
cherylmaclaurin@chestnutpark.com | 705-446-8005

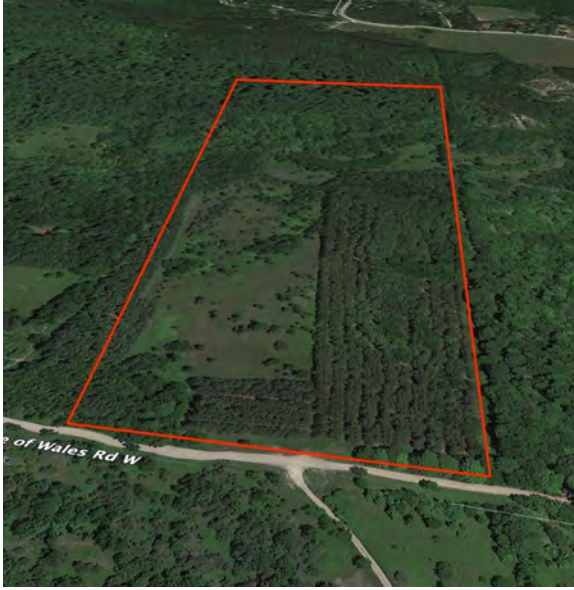
KRIS MCALEER, Sales Representative
kris@georgianbaygroup.com | 705-446-5333

**CHESTNUT
PARK**TM

REAL ESTATE LIMITED, BROKERAGE

CHRISTIE'S
INTERNATIONAL REAL ESTATE

BUILD YOUR OWN DREAM



Situated in one of the most sought after areas North of Toronto, nestled amongst grand country estates, this rare, very private, 33 acre parcel in Mulmur presents the discerning buyer with the perfect blank canvas to build their dream home or retreat with several potential building sites. The property boasts a diversity of tree species, including semi-mature pine and hardwood forests with a stunning river running through it, a private wild berry sanctuary and a trail system that hooks into the neighbours' - hike or snowshoe to your heart's content & never encounter another person. Located at the end of a four season maintained road, adjacent to the Bruce Trail and mere minutes to the bucolic village of Creemore, Mad River Golf Club and the private ski Clubs of Mansfield and Devil's Glen. All just 60 minutes from Pearson International Airport. There are very few, if any, pieces of vacant land like this left in Mulmur.



ROB MCALEER
Sales Representative
705-888-3981 - Direct
705-445-5454 - Office
rob@georgianbaygroup.com



CHERYL MACLAURIN
Sales Representative
705-446-8005 - Direct
705-445-5454 - Office



KRIS MCALEER
Sales Representative
705-446-5333 - Direct
705-445-5454 - Office
kris@georgianbaygroup.com