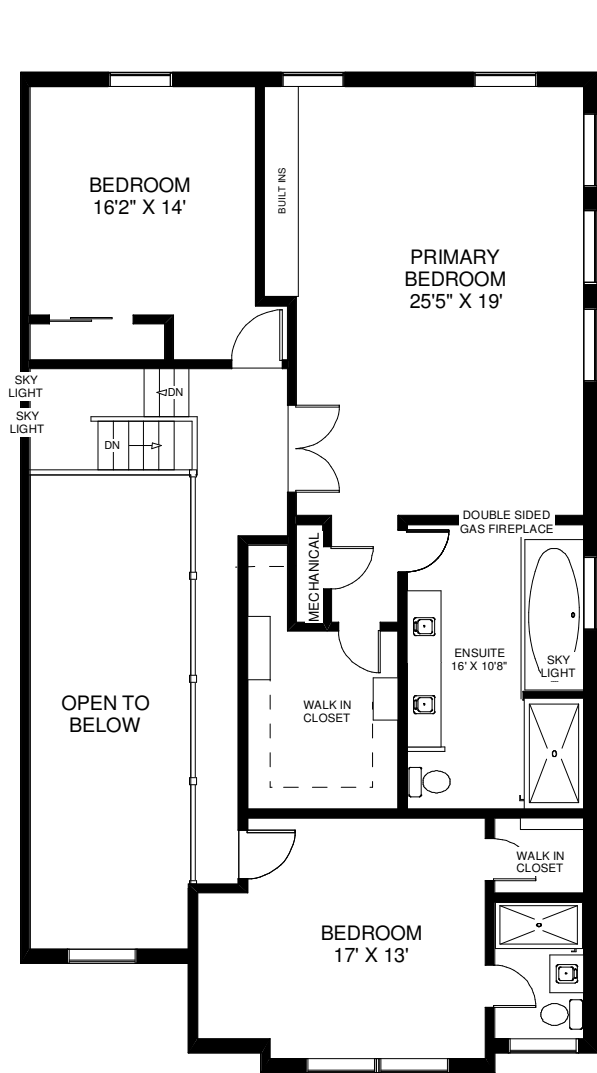


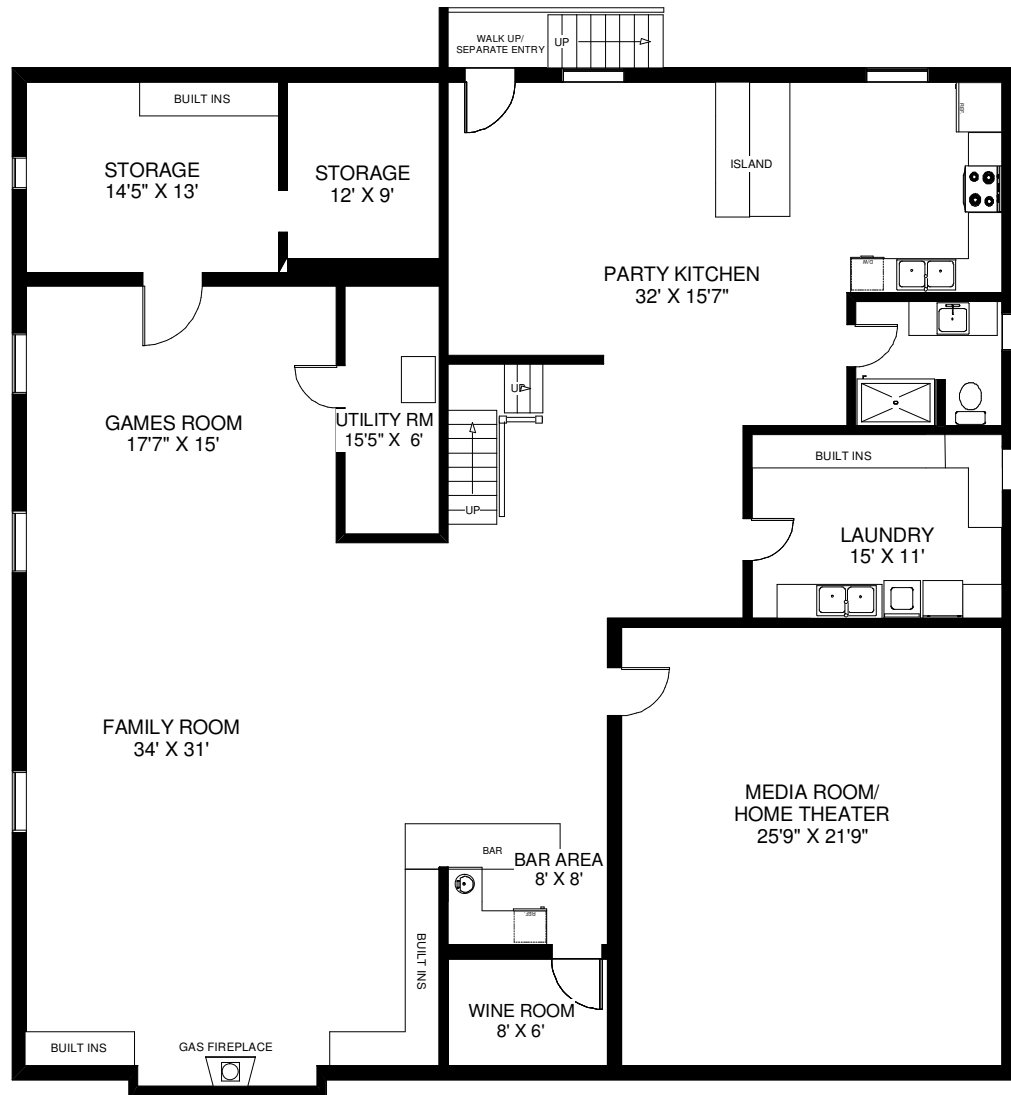
MAIN LEVEL
APPROXIMATELY 2,600 SQ FT

Note: Measurements & Calculations are approximate. Provided as a guideline only.

509 THE KINGSWAY



CEILING HT 9'
SECOND LEVEL
 APPROXIMATELY 1,700 SQ FT



CEILING HT 9'
LOWER LEVEL
 APPROXIMATELY 3,600 SQ FT

Note: Measurements & Calculations are approximate. Provided as a guideline only.