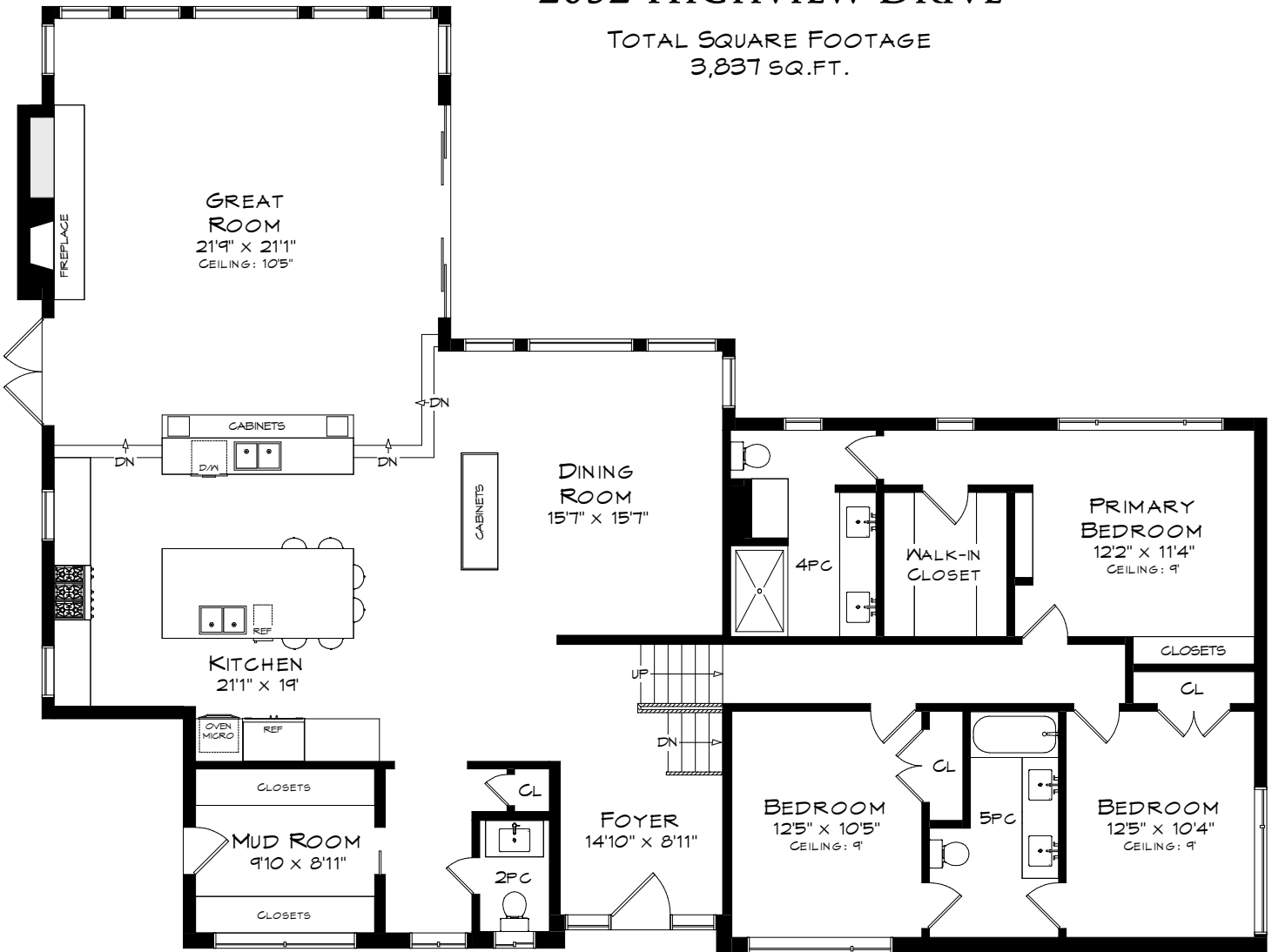


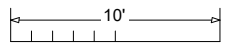
2052 HIGHVIEW DRIVE

TOTAL SQUARE FOOTAGE
3,837 SQ.FT.



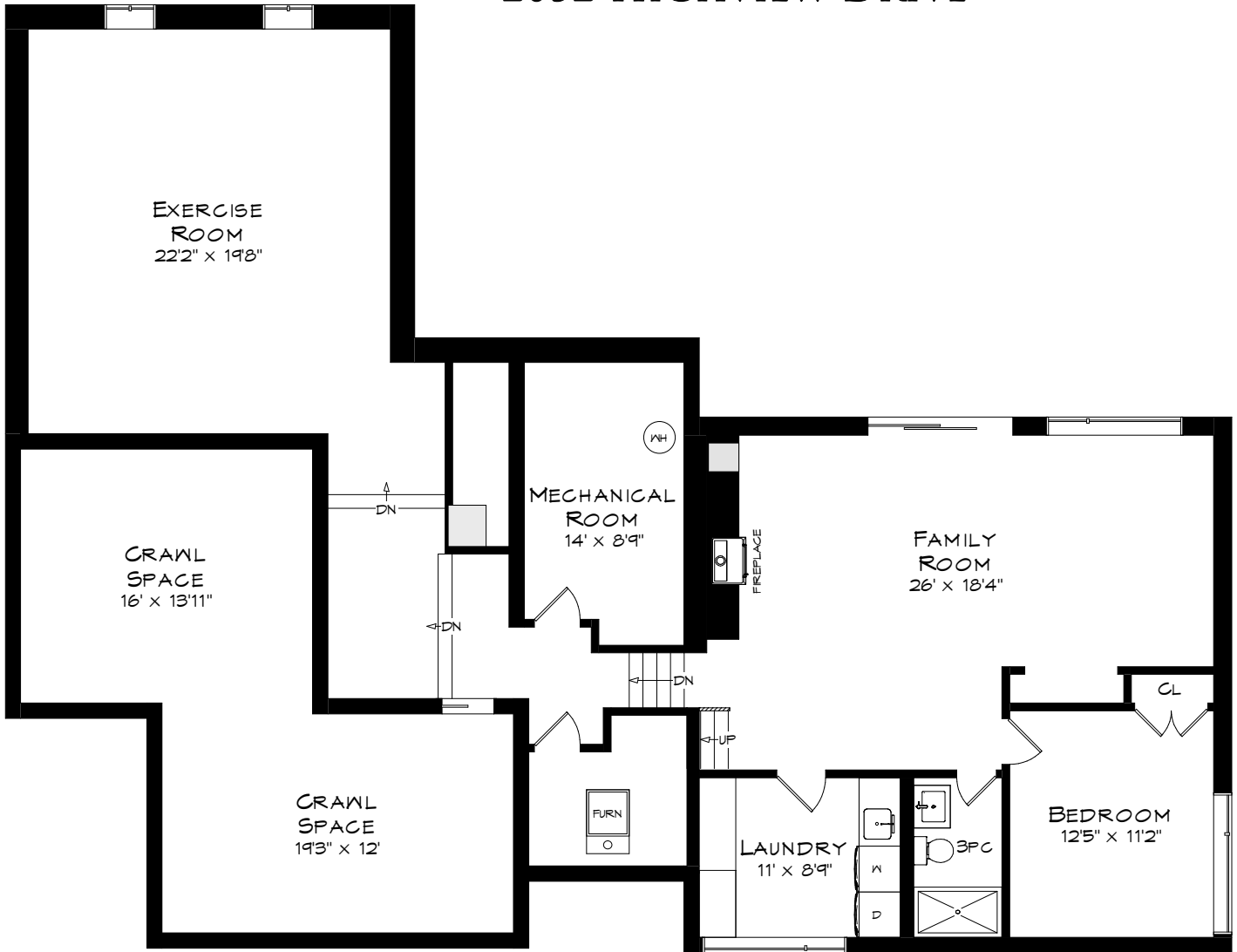
MAIN LEVEL
1,569 SQUARE FEET

UPPER LEVEL
876 SQUARE FEET



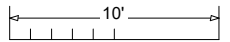
Measurements may not be 100% accurate
and should be used as a guideline only.
April - 2024

2052 HIGHVIEW DRIVE



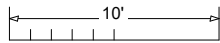
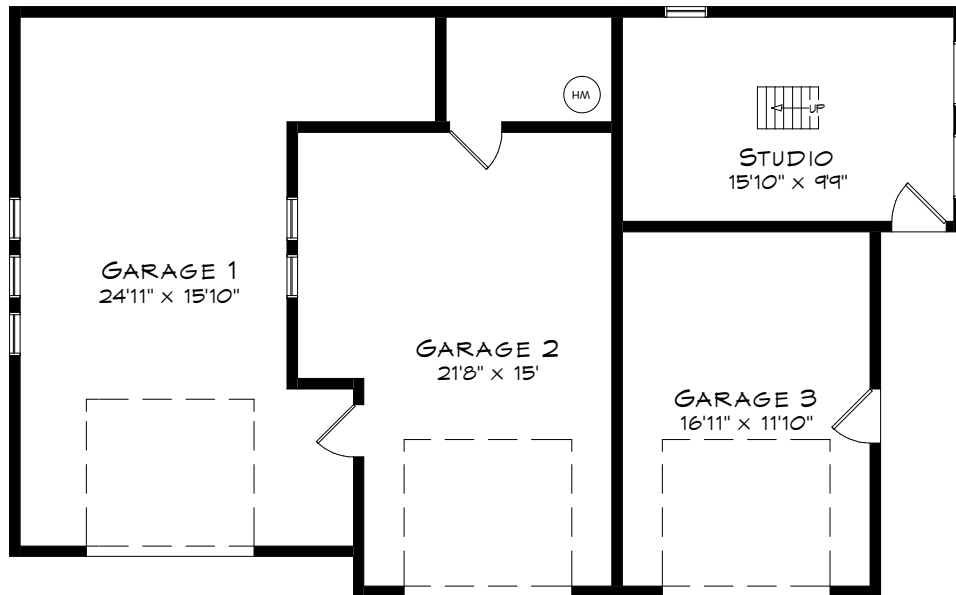
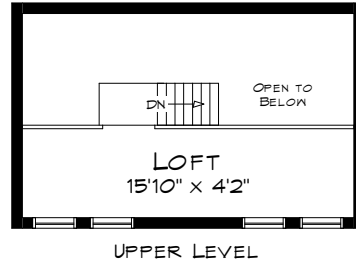
LOWER LEVEL
516 SQUARE FEET
+ 505 SF (CRAWL SPACE)

GROUND LEVEL
876 SQUARE FEET



Measurements may not be 100% accurate
and should be used as a guideline only.
April - 2024

2052 HIGHVIEW DRIVE



Measurements may not be 100% accurate
and should be used as a guideline only.
April - 2024

GARAGES
1,013 SQUARE FEET

STUDIO & LOFT
251 SQUARE FEET