



The Hazelton

HOTEL & PRIVATE RESIDENCES
YORKVILLE & HAZELTON

SUITE 601

OPTION C

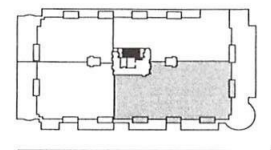
5,206 SQ. FT.

GLUCKSTEINDESIGN

11'-0" CEILING HEIGHT.
1'-0" PROVISION MADE TO
ACCOMMODATE ALL MECHANICAL
AND ELECTRICAL DISTRIBUTION

DRYWALL CEILING HEIGHT OF 10'-0"
EXCLUDING A 1 3/4" PROVISION
FOR FLOOR FINISHES

4 1/2" WOOD CASTING TRIM AND
CUSTOM BUILT FRENCH DOORS
9'-4" H X 6'-0" W OPENING INWARDS



HAZELTON AVENUE

YORKVILLE AVENUE



This plan is based on architectural plans at the time of printing. The developer reserves the right to make changes and modifications to maintain the high standards of this development. E.&O.E.
Note: Square footages and dimensions are approximate only and are meant solely for illustration purposes. Purchasers are specifically advised that dimension and square footages may change on completion of the condominiums.

