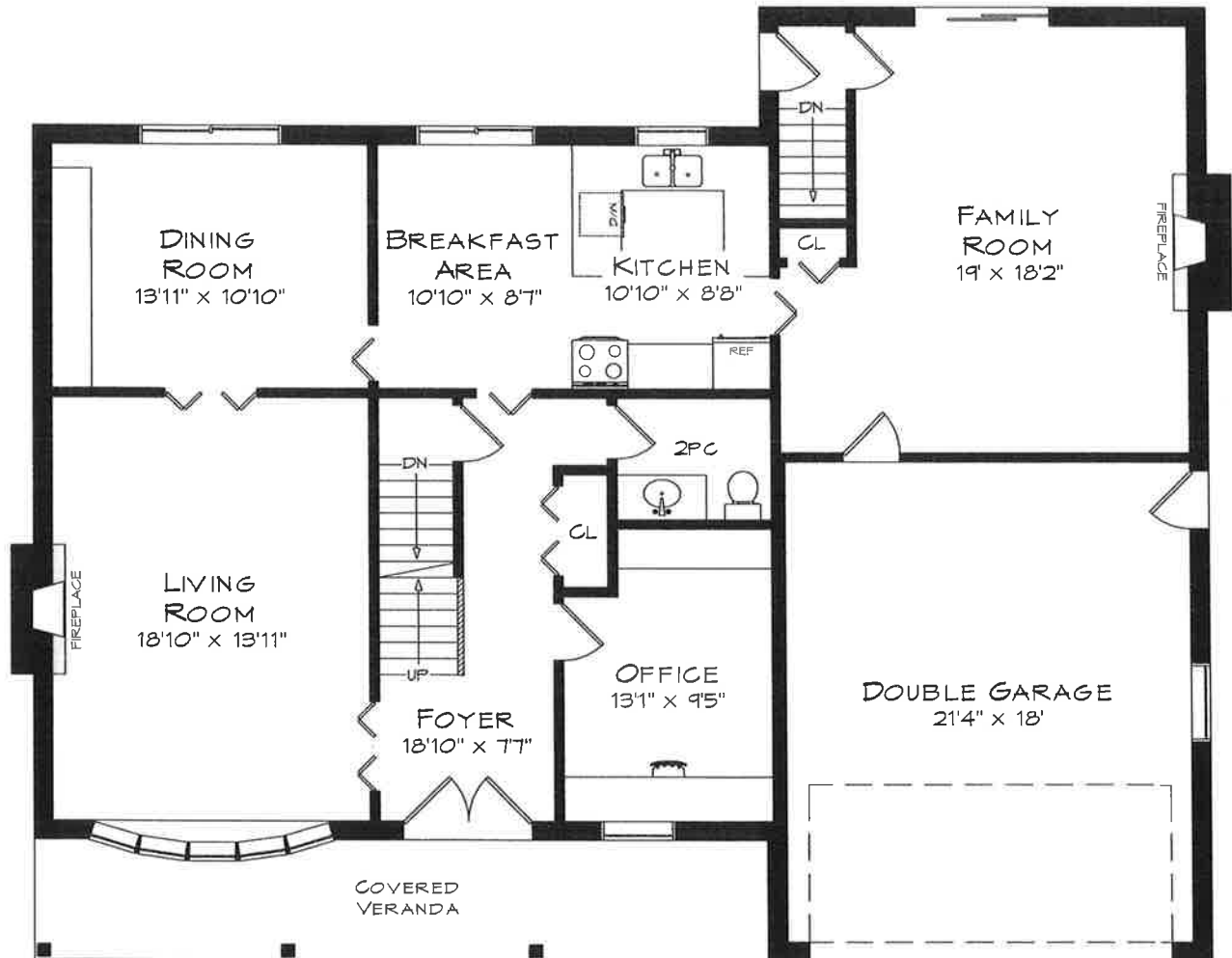


# 415 ROSSLYN DRIVE

TOTAL SQUARE FOOTAGE  
3,990 SQ.FT.



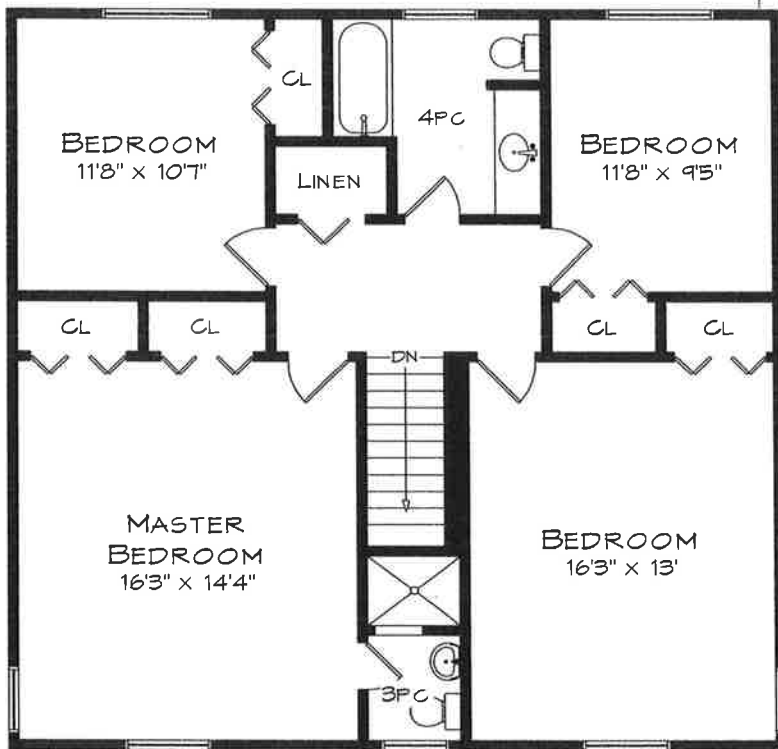
MAIN LEVEL  
1,448 SQUARE FEET

GARAGE  
423 SQUARE FEET

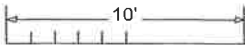


Measurements may not be 100% accurate  
and should be used as a guideline only.  
April - 2016

# 415 ROSSLYN DRIVE

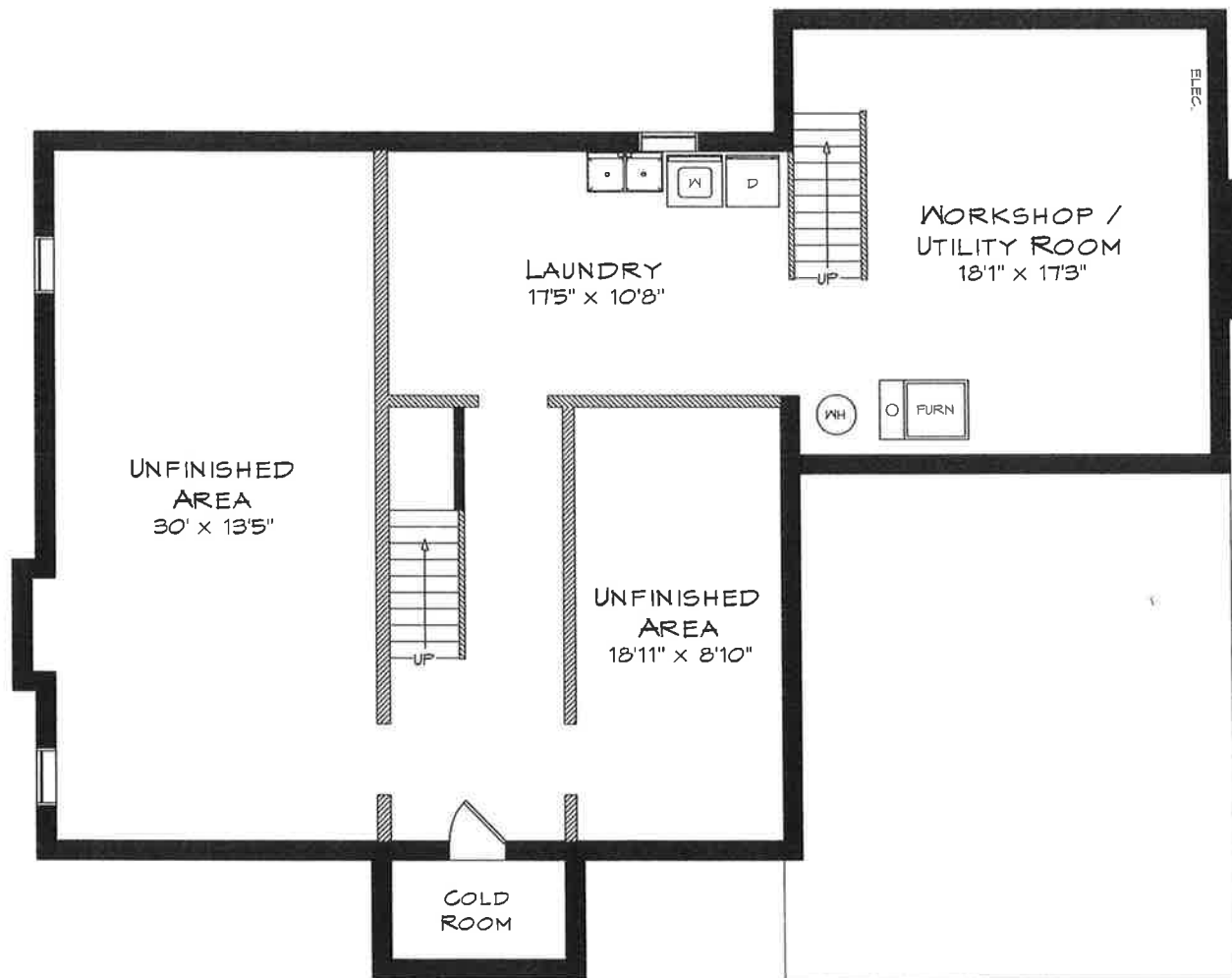


UPPER LEVEL  
1,046 SQUARE FEET

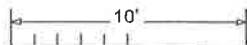


Measurements may not be 100% accurate  
and should be used as a guideline only.  
April - 2016

# 415 ROSSLYN DRIVE



LOWER LEVEL  
1,496 SQUARE FEET



Measurements may not be 100% accurate  
and should be used as a guideline only.  
April - 2016